

# TORR▶METALS

CORPORATE PRESENTATION SEPTEMBER 2025

Defining Discoveries Among  
**Copper** & **Gold** Giants

TSX.V | TMET

# FORWARD LOOKING STATEMENTS

Certain statements and/or graphics in the Company's press releases, web site information and corporate displays, among others, constitute "forward-looking statements". These statements are based on information currently available to the Company and the Company provides no assurance that actual results will meet management's expectations. Forward-looking statements include estimates and statements that describe the Company's future plans, objectives or goals, including words to the effect that the Company or management expects a stated condition or result to occur. Forward-looking statements may be identified by terms such as "believes", "anticipates", "expects", "estimates", "may", "could", "would", "will", or "plan", or their conditional or future forms. Since forward-looking statements are based on assumptions and address future events and conditions, by their very nature they involve inherent risks and uncertainties. Actual results relating to, among other things, results of exploration, project development, reclamation and capital costs of the Company's mineral properties, and the Company's financial condition and prospects, could differ materially from those currently anticipated in such statements for many reasons such as: changes in general economic conditions and conditions in the financial markets; changes in demand and prices for minerals ; litigation, legislative, environmental and other judicial, regulatory, political and competitive developments; technological and operational difficulties encountered in connection with the activities of the Company; and other matters discussed in this presentation. This list is not exhaustive of the factors that may affect any of the Company's forward-looking statements. These and other factors should be considered carefully and readers should not place undue reliance on the Company's forward-looking statements. The Company does not undertake to update any forward looking statement that may be made from time to time by the Company or on its behalf, except if required to do so by applicable securities laws. You are cautioned not to place any undue reliance on any forward-looking statement.

## FORWARD LOOKING STATEMENTS OR INFORMATION RELATED TO EXPLORATION

Relating to exploration, the identification of exploration targets and any implied future investigation of such targets on the basis of specific geological, geochemical and geophysical evidence or trends are future-looking and subject to a variety of possible outcomes which may or may not include the discovery, or extension, or termination of mineralization. Further, areas around known mineralized intersections or surface showings may be marked by wording such as "open", "untested", "possible extension" or "exploration potential" or by symbols such as "?". Such wording or symbols should not be construed as a certainty that mineralization continues or that the character of mineralization (e.g. grade or thickness) will remain consistent from a known and measured data point. The key risks related to exploration in general are that chances of identifying economical reserves are extremely small. The presentation contains historical exploration data that have not been verified by Torr Metals and may not be accurate or complete, and therefore the information should not be relied upon.

Michael Dufresne, M.Sc., P.Geol., P.Geo., an independent director of the Company, also serves as a Technical Advisor and is the Qualified Person, as defined by National Instrument 43-101, responsible for reviewing and approving the technical content of all materials publicly disclosed by Torr, including the contents of this presentation.

# POISED FOR BREAKTHROUGH DISCOVERIES

TORR METALS

- **Prime Locations Within Premier Jurisdictions**
  - Adjacent to infrastructure and roadways
- **100% Ownership of Three District-scale Projects**
  - Outside a strategic 57 km<sup>2</sup> option within the Kolos Copper-Gold Project
- **Multiple Opportunities for New Discoveries**
  - **4** undrilled copper porphyry targets (Kolos)
  - **2** undrilled orogenic gold targets (Filion)
- **Majors As Neighbours!**
  - Within 100 km of projects owned by Teck, Newmont, Hudbay, KGHM, Fortescue and Boliden



Targeting 4 High-Grade  
Copper & Gold Porphyry  
Centers in British Columbia  
Between 3 Major Operating Mines



# MANAGEMENT



**Malcolm Dorsey,**  
**M.Sc., P.Geo**

President, CEO & Director

Malcolm is an experienced exploration geologist and project developer with over 12 years of success advancing copper and gold projects from early-stage discovery to resource definition across the Americas. He co-founded Torr Resources Corp., a private project generator, and holds a Master of Science in Geology and Geophysics from the University of Calgary.



**John Williamson,**  
**P.Geo**

Chairman & Director

John is a veteran mining executive and investor with more than 30 years of experience founding, financing, and leading private and public companies with global exploration and mining interests. His leadership teams have been recognized by inclusion in the TSX Venture 50™ for excellence in performance and growth.



**Taylor Niezen**  
**CFO**

Taylor is a partner at Sprout Sourcing, where she specializes in financial strategy and regulatory compliance for both private and publicly listed companies across the TSX Venture and other North American exchanges, ensuring they meet rigorous financial standards and strategic goals.



**Gordon Maxwell,**  
**P. Geo**

Director

Gordon is a distinguished geologist with nearly 40 years of global mining experience at Noranda, Xstrata, and Glencore. A recipient of the AME BC's David Barr Award and PDAC's Skookum Jim Award, he serves on the board and several key committees, advising the Centre of Excellence for Sustainable Mining & Exploration.



**Sean Mager,**  
**B.Comm.**

Director

Sean is a mining executive and corporate advisor with over 25 years of experience overseeing transactions, operations, and capital markets for more than 20 public and private resource companies globally. Currently, he serves as CFO of Benchmark Metals (TSX.V: BNCH), guiding its financial strategy and market presence.

# CAPITAL STRUCTURE

**52 Million**

Shares Outstanding

**\$0.075 – \$0.18**

52 Week Range

**7.8 Million**

Warrants at 20c and 25c

**63.5 Million**

Fully Dilluted

**\$0.15**

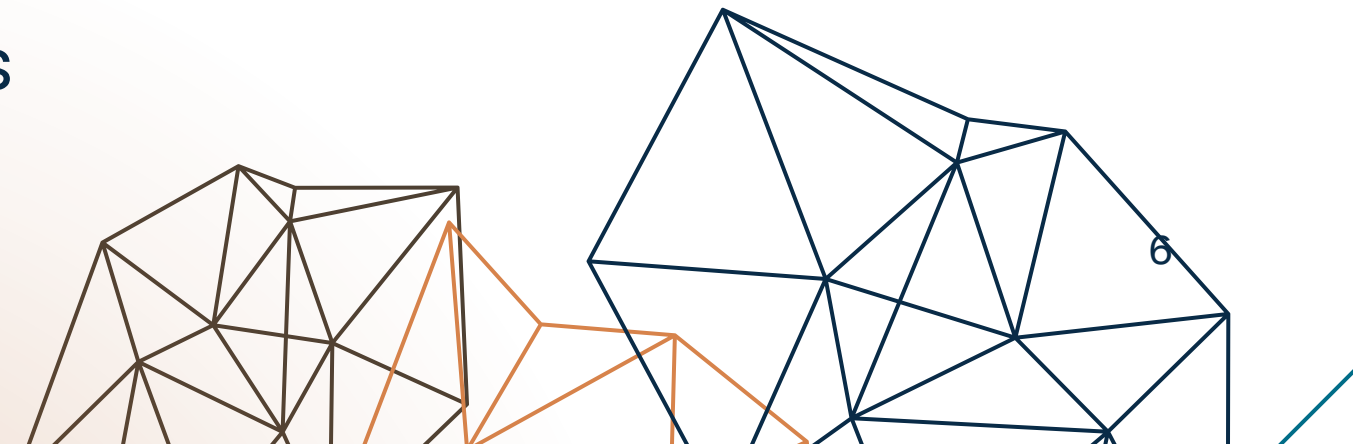
Share Price Sept 12. 2025

**\$7.8 Million**

Market Cap Sept 12. 2025

**21%**

Held By Management & Insiders



# THE VALUE OF GREENFIELD DISCOVERY

## NorthWest Copper Corp.

2014-2021



- **Discovery:** East Niv porphyry system — first drill program in 2021
- **Discovery hole:** 81.6 m @ 0.56% CuEq, incl. 14.8 m @ 1.02% CuEq (Nov 2021)
- **Catalyst setup:** Share price rose in mid-2021 on staking and drill campaign launch before assay results
- **Type:** True greenfield discovery from surface work and first-ever drilling

## Amarc Resources Ltd.

2025



- **Discovery:** AuRORA deposit at JOY District — announced January 2025
- **Initial hole:** JP24057 intersected 125 m of 0.5% CuEq near surface
- **Type:** First-ever drill testing of previously untested targets
- **Scale:** Multiple porphyry centers emerging across 495 km<sup>2</sup> land package in BC

## GT Gold

2016 - 2021



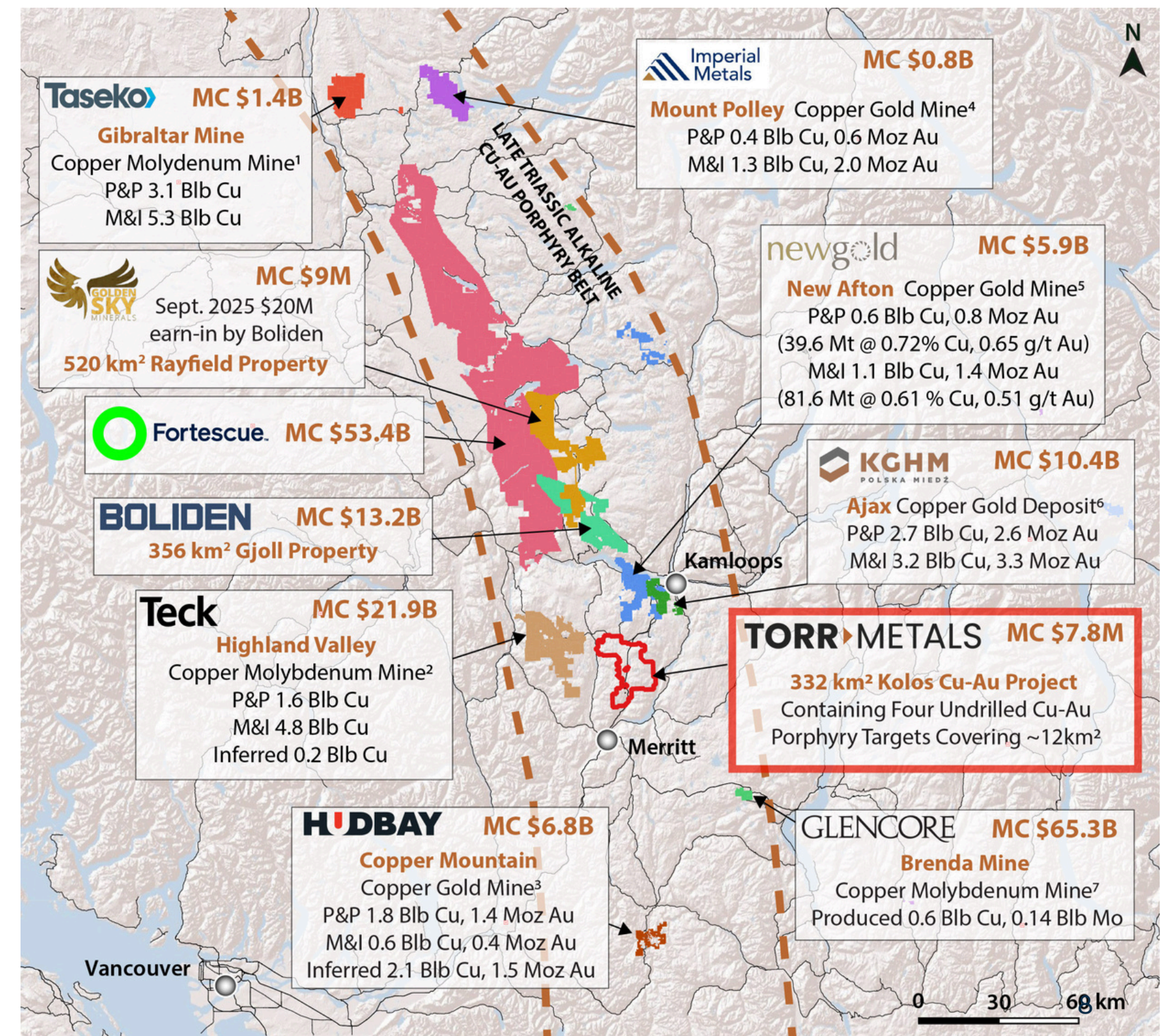
- **Discovery:** Saddle North porphyry and Saddle South epithermal system
- **Drilling began:** ~2017–2018; high-grade intercepts defined in 2019
- **Exit:** Acquired by Newmont in March 2021 for C\$3.25/share
- **Deal value:** ~C\$456 million total, a ~38% premium to market



# KOLOS COPPER-GOLD PROJECT

TORR METALS

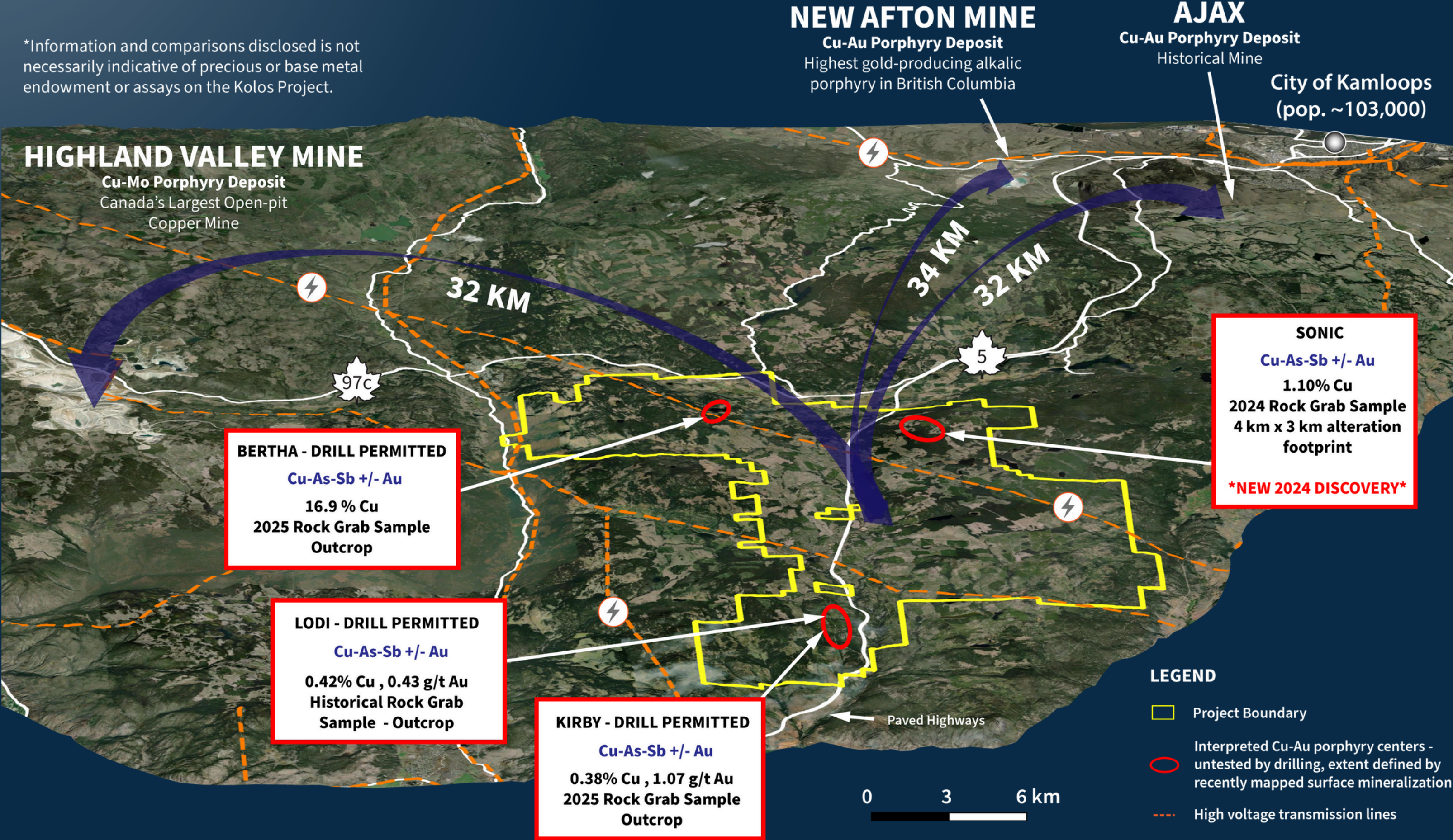
- **Where Are the Majors Focusing in BC? All signs point to the Quesnel Trough**
  - Canada's most productive copper belt
  - Well-connected infrastructure: highways, ports, railways, power, and nearby communities
  - Multiple operating mines but largely underexplored
- **Feeding the Future: Critical for Operating Mines**
  - **All will reach end of life within 30 years:** New Afton (2031), Mount Polley (2031), Gibraltar (2044), Highland Valley (2046), Copper Mountain (2054)
- **Strategic Location, Strong Upside: Kolos Hosts Four Targets with Discovery Potential**
  - Highway accessible geochemical anomalies covering 12 km<sup>2</sup> with no prior drilling





# KOLOS HIGHLIGHTS

\*Information and comparisons disclosed is not necessarily indicative of precious or base metal endowment or assays on the Kolos Project.

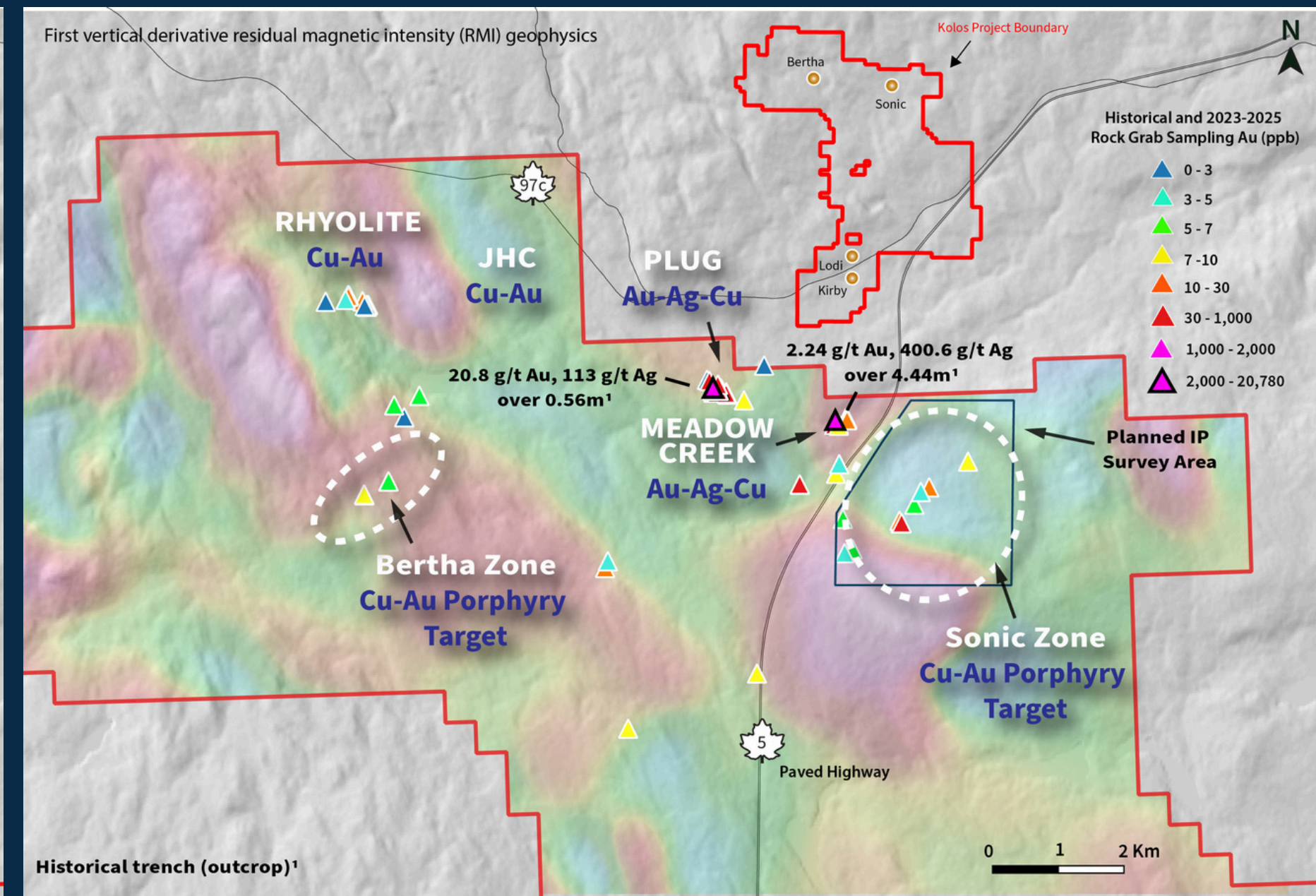
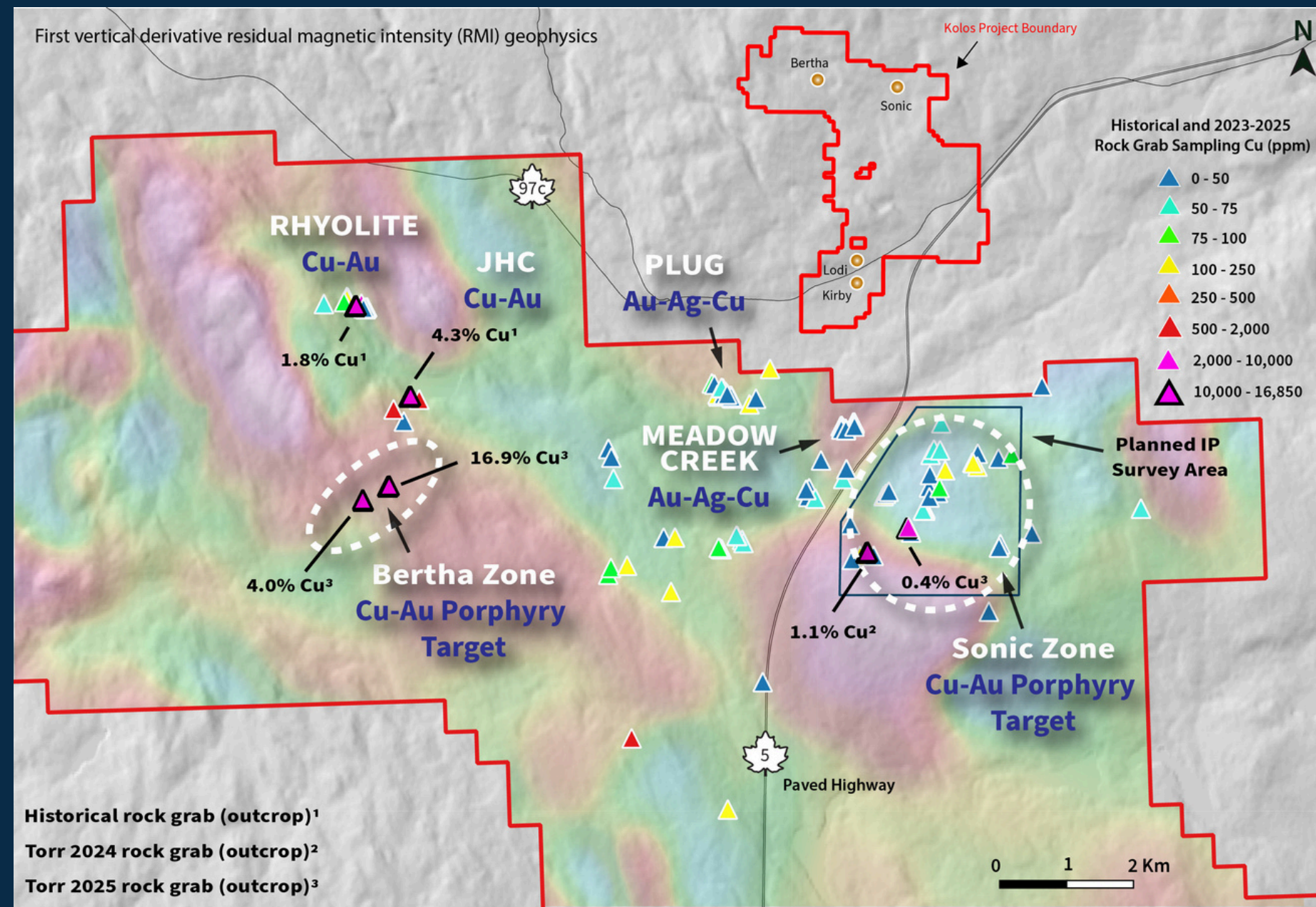




# NORTHERN TARGETS - ROCK GEOCHEMISTRY

TORR METALS

>10 km Corridor (NW-SE) of High-Grade Cu-Au Mineralization



- Strong geological comparisons and potential structural links between the Bertha and Sonic Cu-Au porphyry targets to the New Afton and Ajax deposits respectively, ~30 km to the northeast
- 6 km<sup>2</sup> IP survey planned to delineate potential high-impact exploration target at Sonic



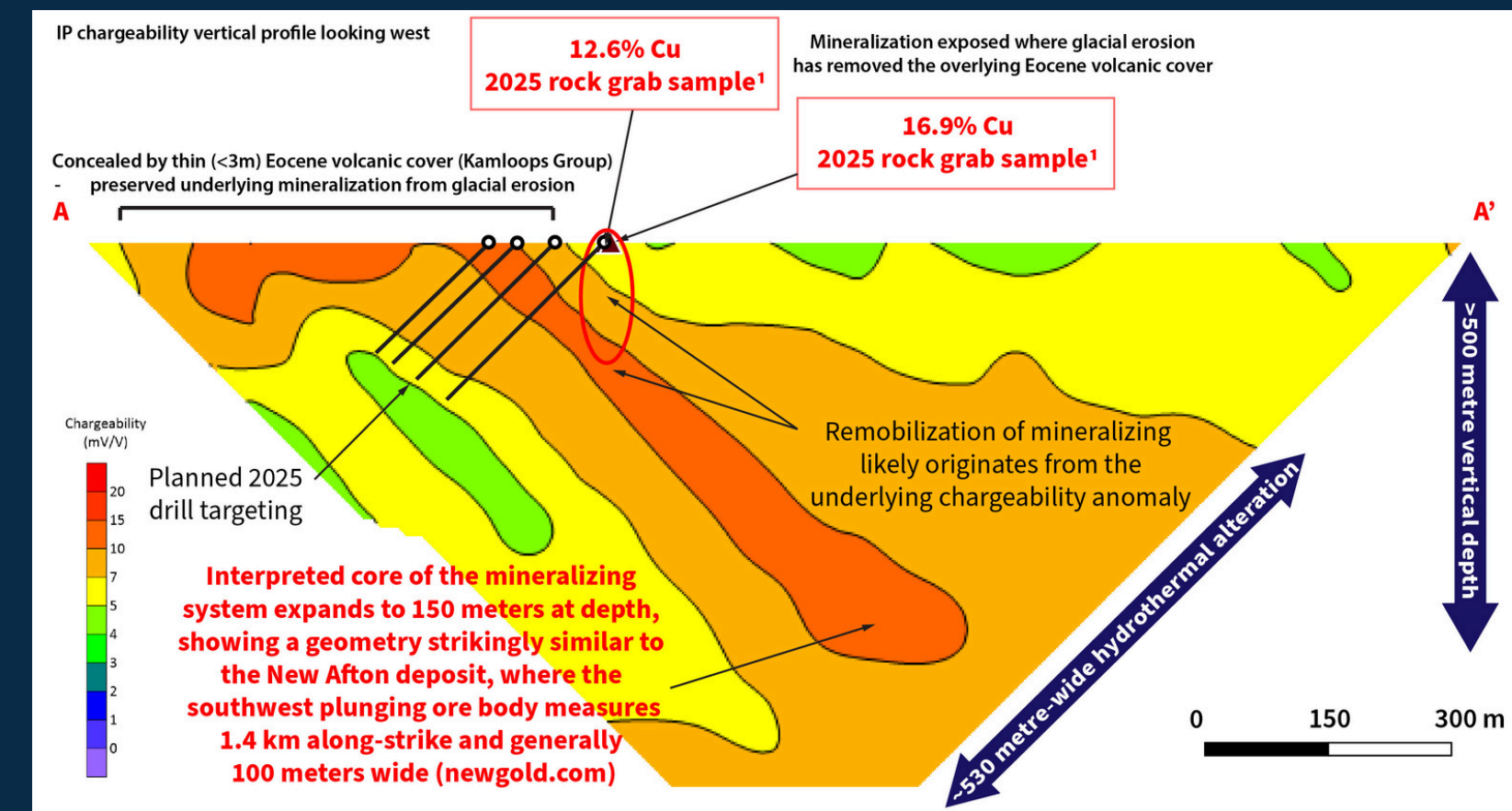
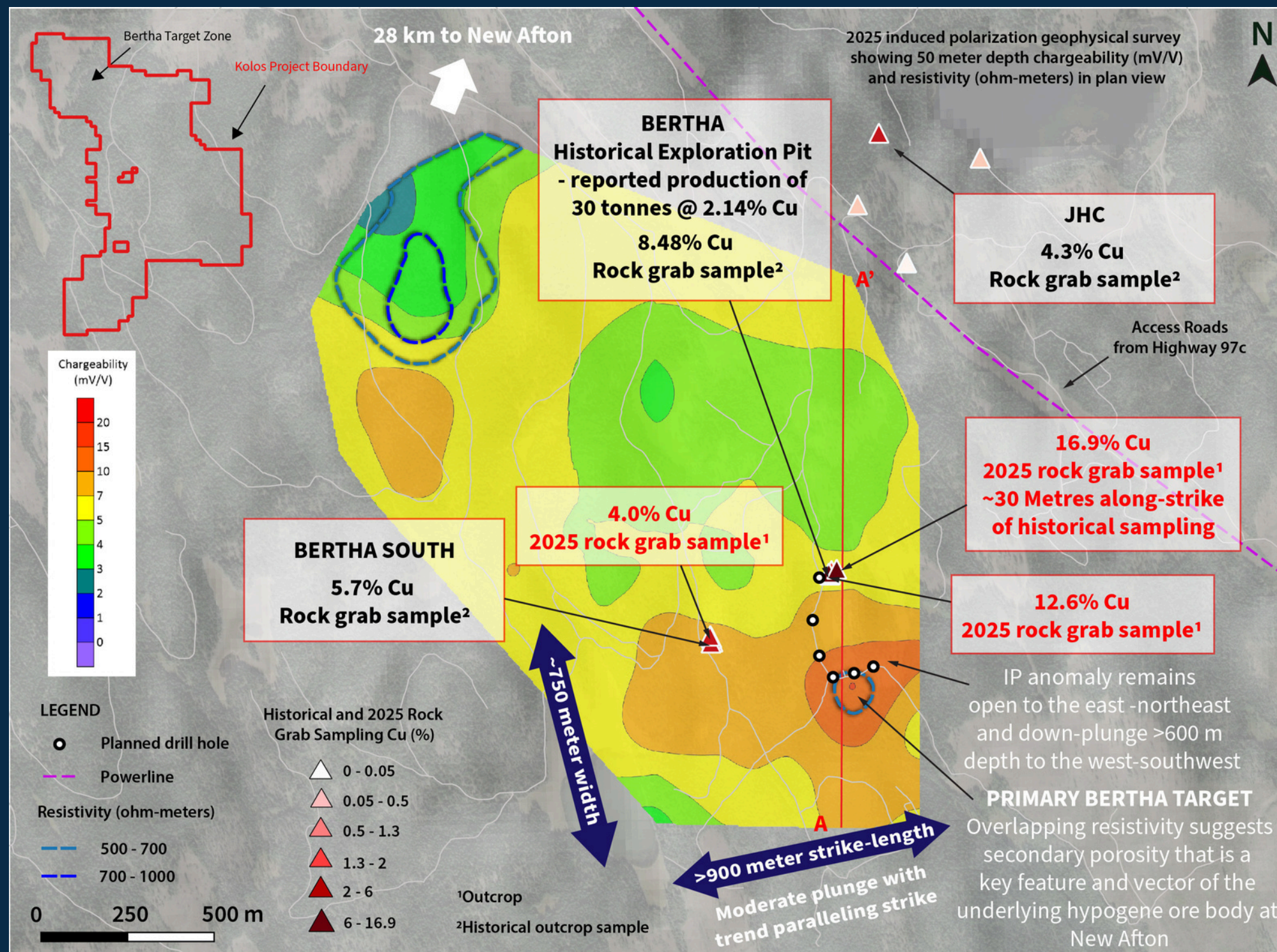
# BERTHA TARGET - NW KOLOS

TORR METALS

**HIGH-GRADE, MID-TONNAGE POTENTIAL - Up to 16.9% Cu in outcrop**

**Drill Permitted: Phase 1 drill target in Fall 2025**

## IP 2D SECTIONS - CHARGEABILITY



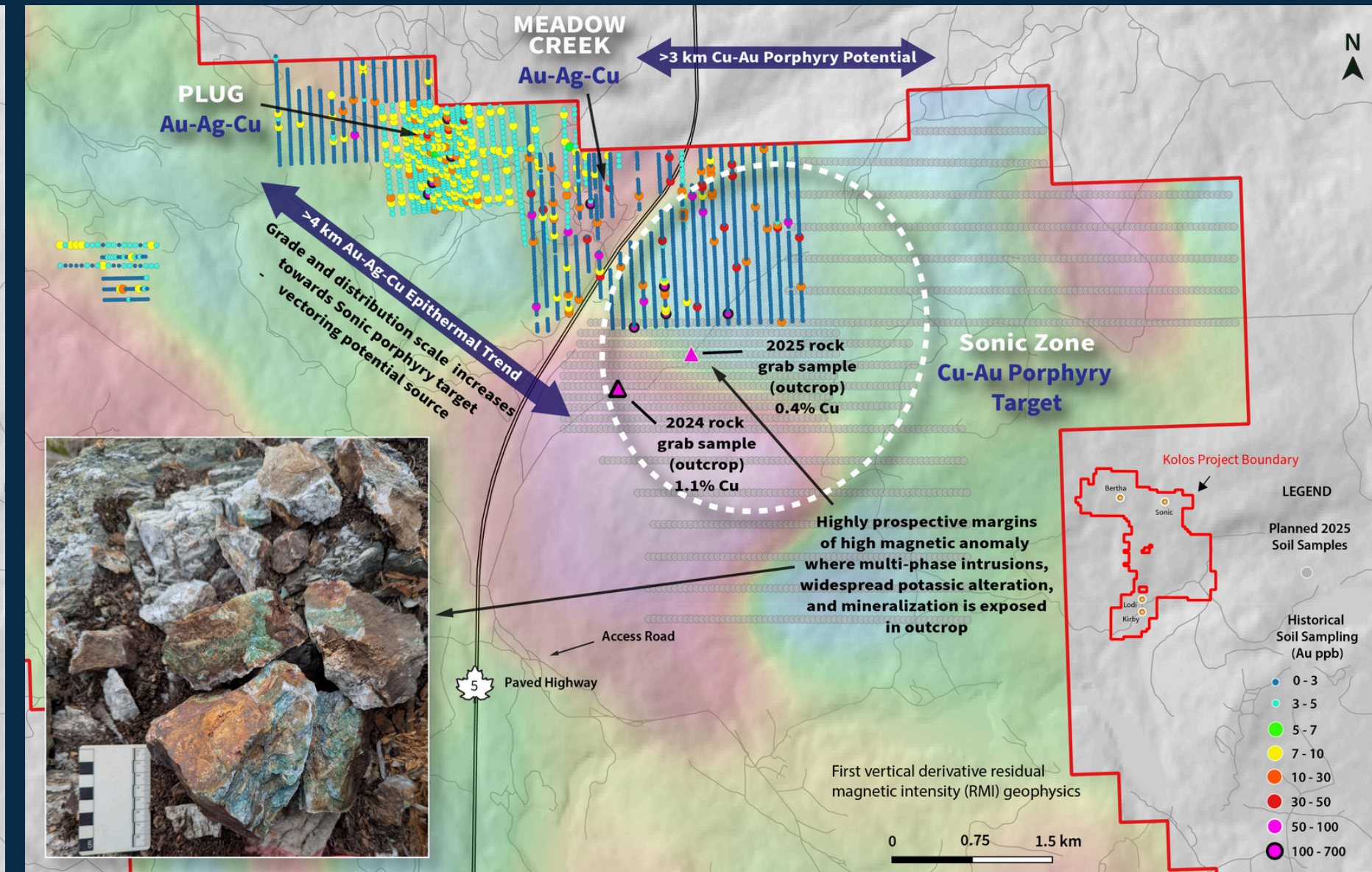
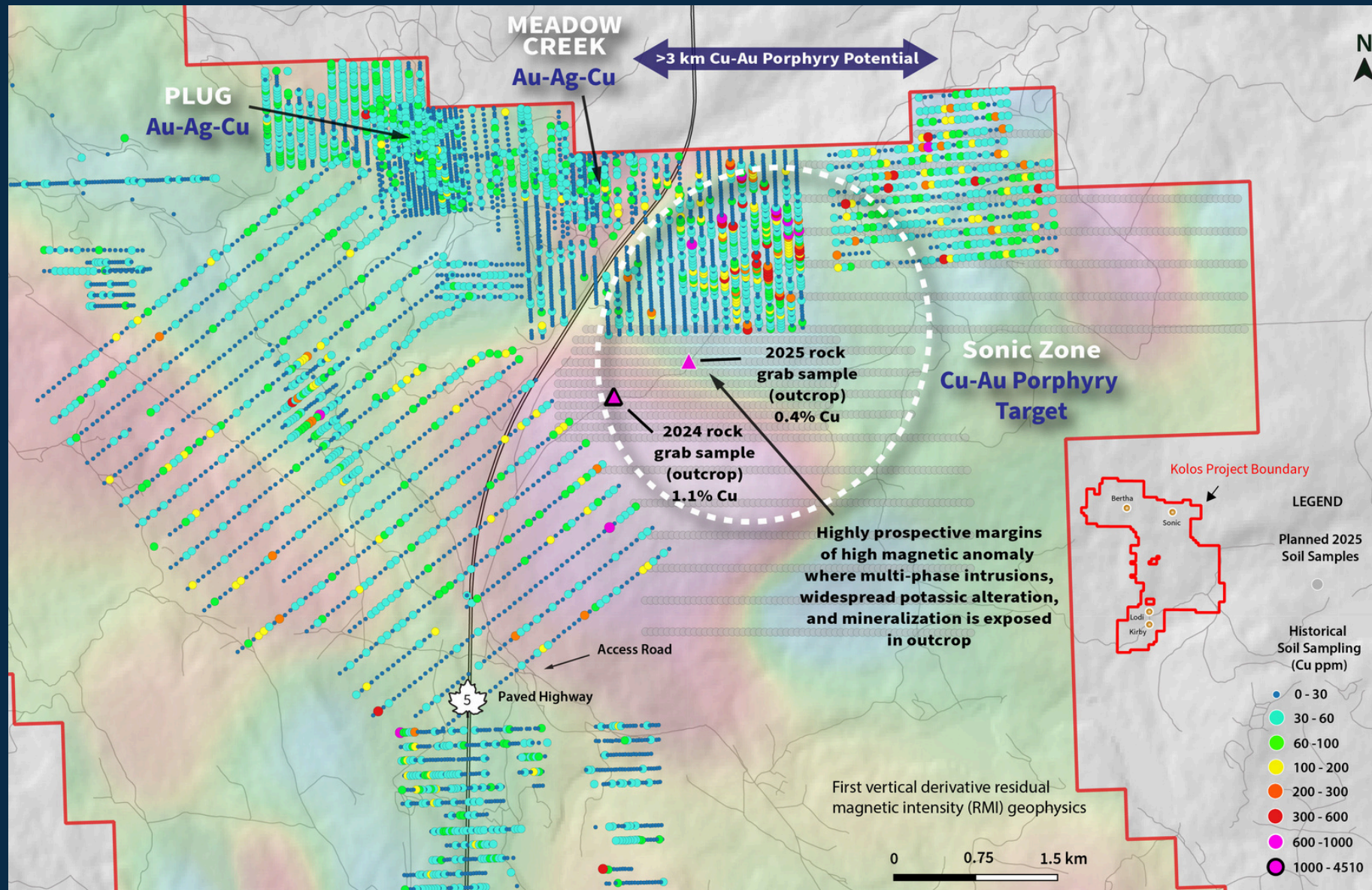
- A large hydrothermal alteration footprint overlaps chargeability (10–20 mV/V) and resistivity (500–700 ohm-m) anomalies along a magnetic high margin, signature and dimensions are highly comparable to the nearby New Afton Cu-Au deposit\*



# SONIC PORPHYRY TARGET - SOIL GEOCHEMISTRY

TORR METALS

**4.5 km<sup>2</sup> undrilled Cu-Au geochemical anomaly next to Highway 5**



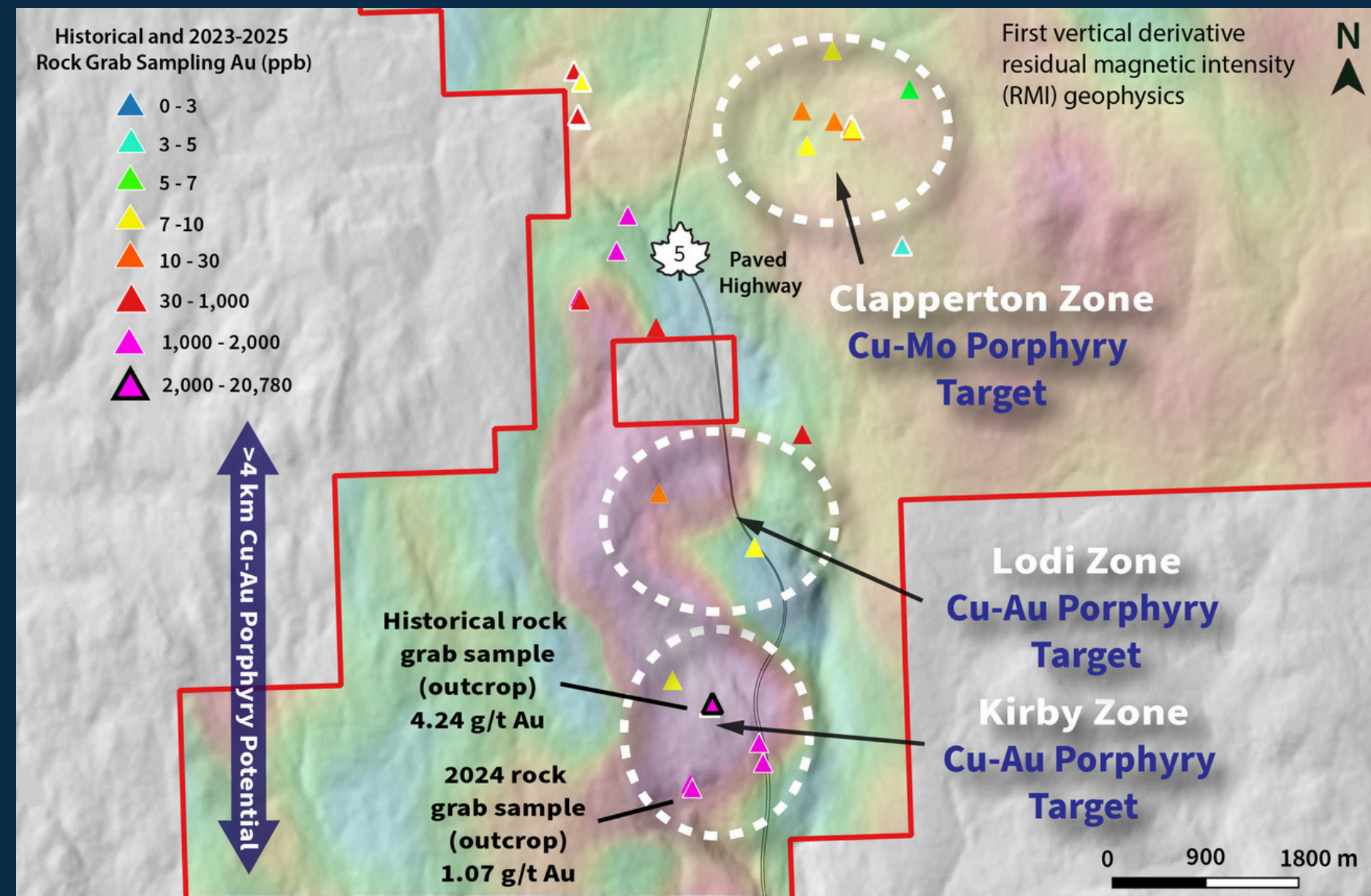
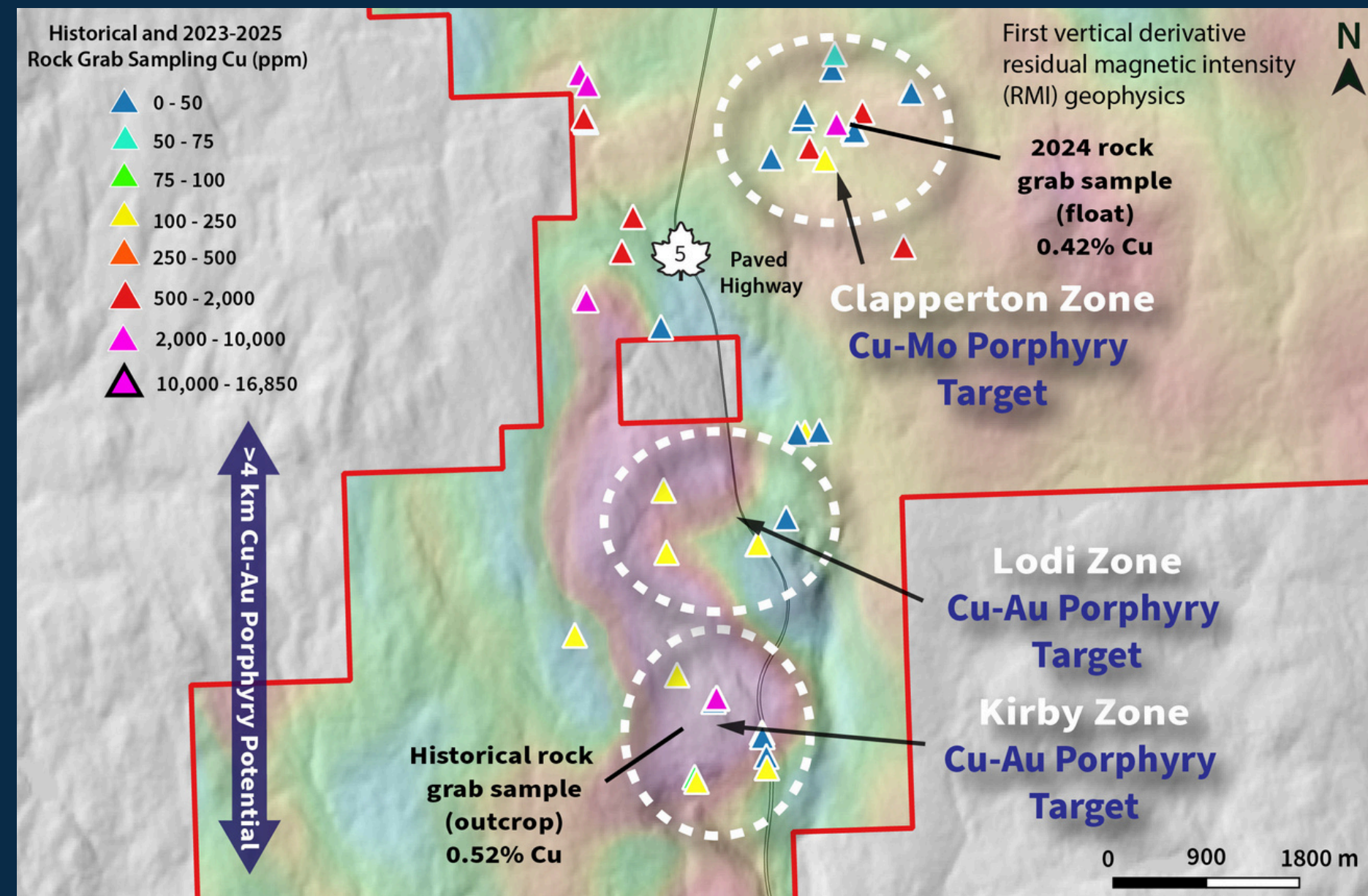
- Up to 1500 soil samples planned for Fall 2025 with potential to define multiple porphyry centers, testing outcrop mineralization that returned up to 1.1% Cu
- Potential to double geochemical footprint in preparation for drilling in 2026 – permit pending



# KIRBY & LODI PORPHYRY - ROCK GEOCHEMISTRY

TORR METALS

>4 km undrilled strike-length to multi-centered porphyry system



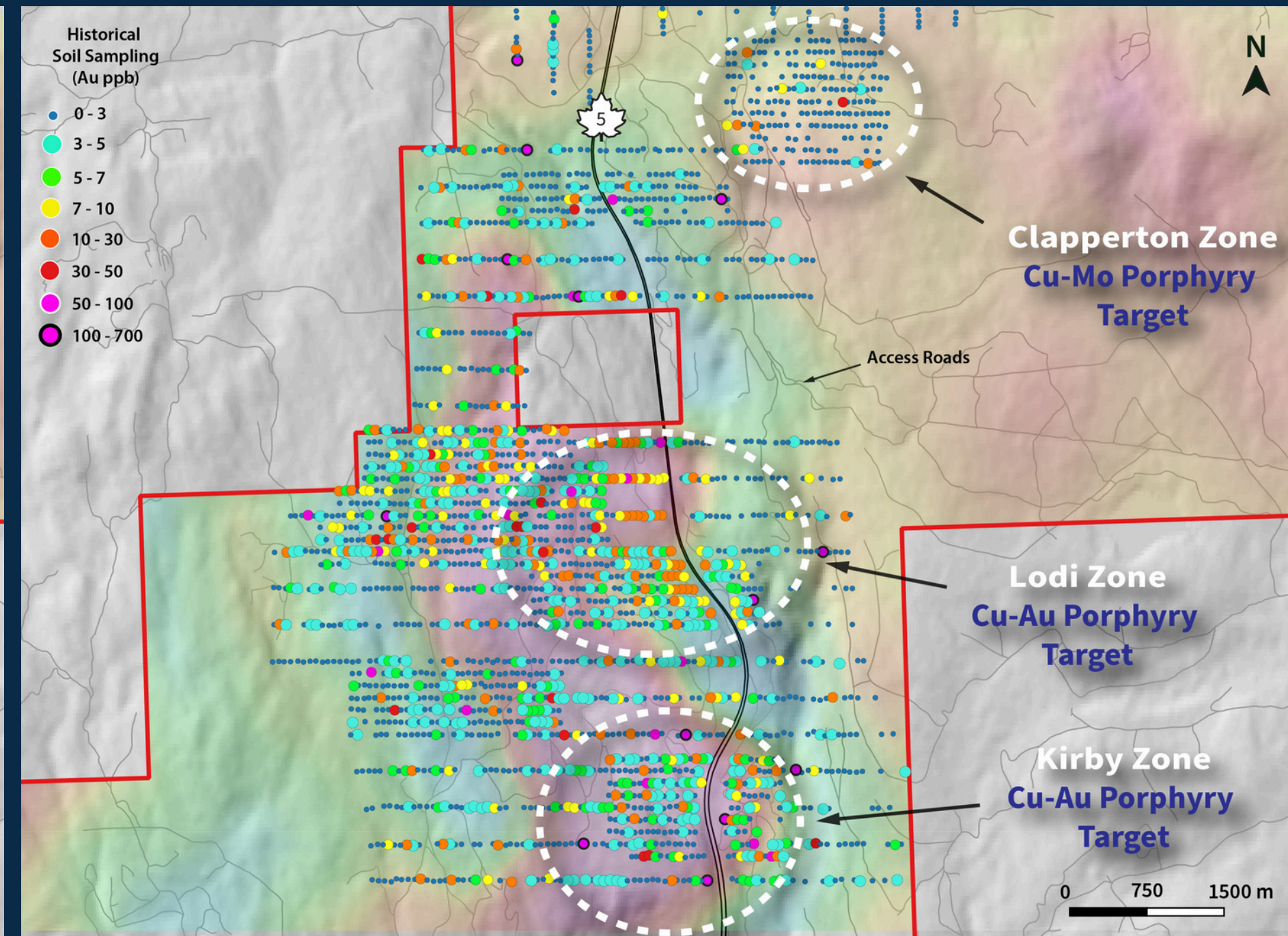
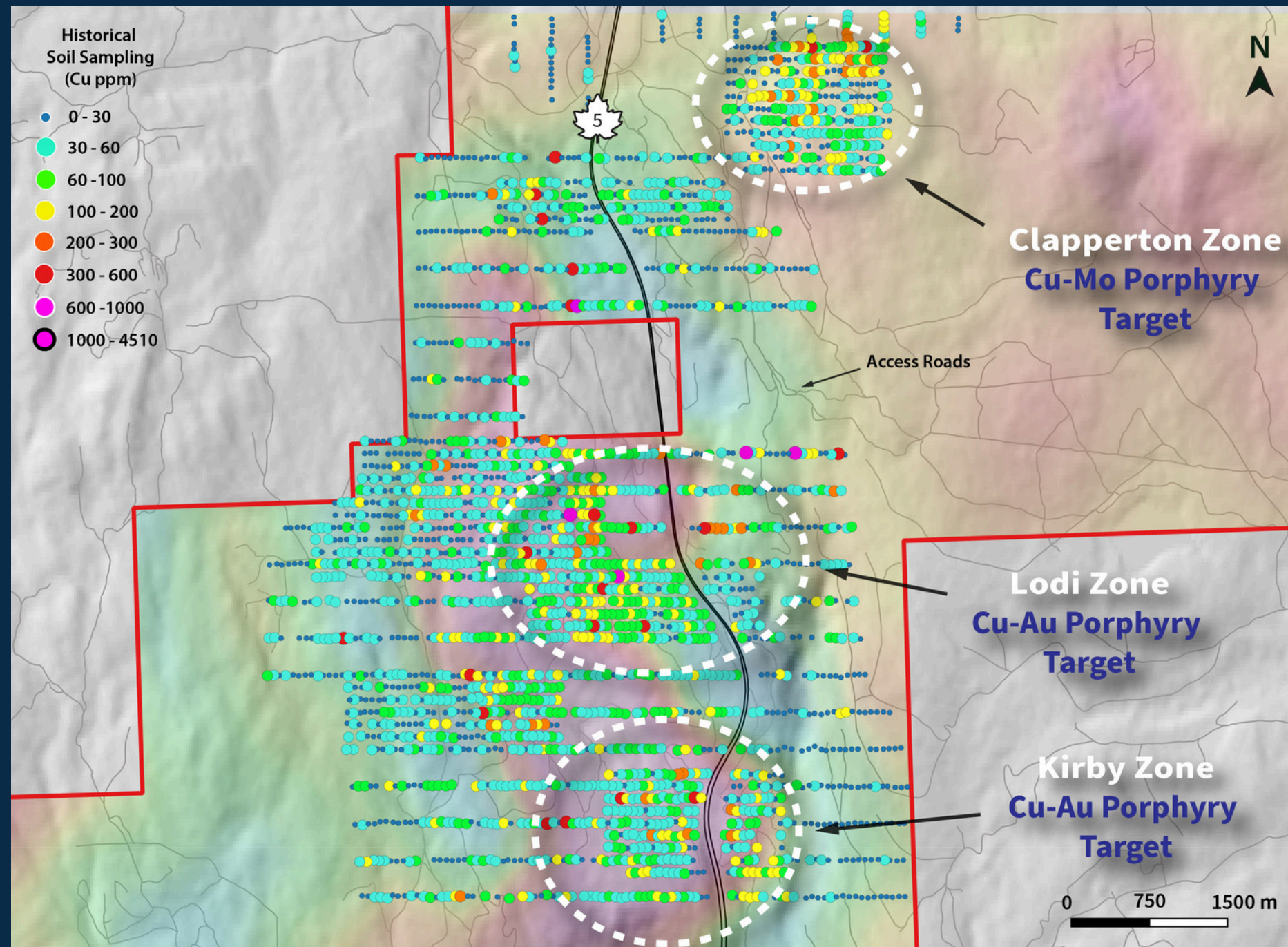
- Strong gold content at the Kirby Cu-Au porphyry target provides vector for Phase 2 drill target
- Comparable in geological setting and surface geochemical anomalism to Kodiak Copper's Gate and Adit Zones ~65 km to the south\*



# SONIC PORPHYRY TARGET - SOIL GEOCHEMISTRY

TORR METALS

6.6 km<sup>2</sup> Cu-Au geochemical anomaly next to Highway 5



- Surface Cu-Au mineralization is coincident with first derivative high residual magnetic (RMI) and 4.3 km<sup>2</sup> ZTEM conductivity geophysical anomalies indicative of host magnetics intrusions and strong hydrothermal alteration and mineralization

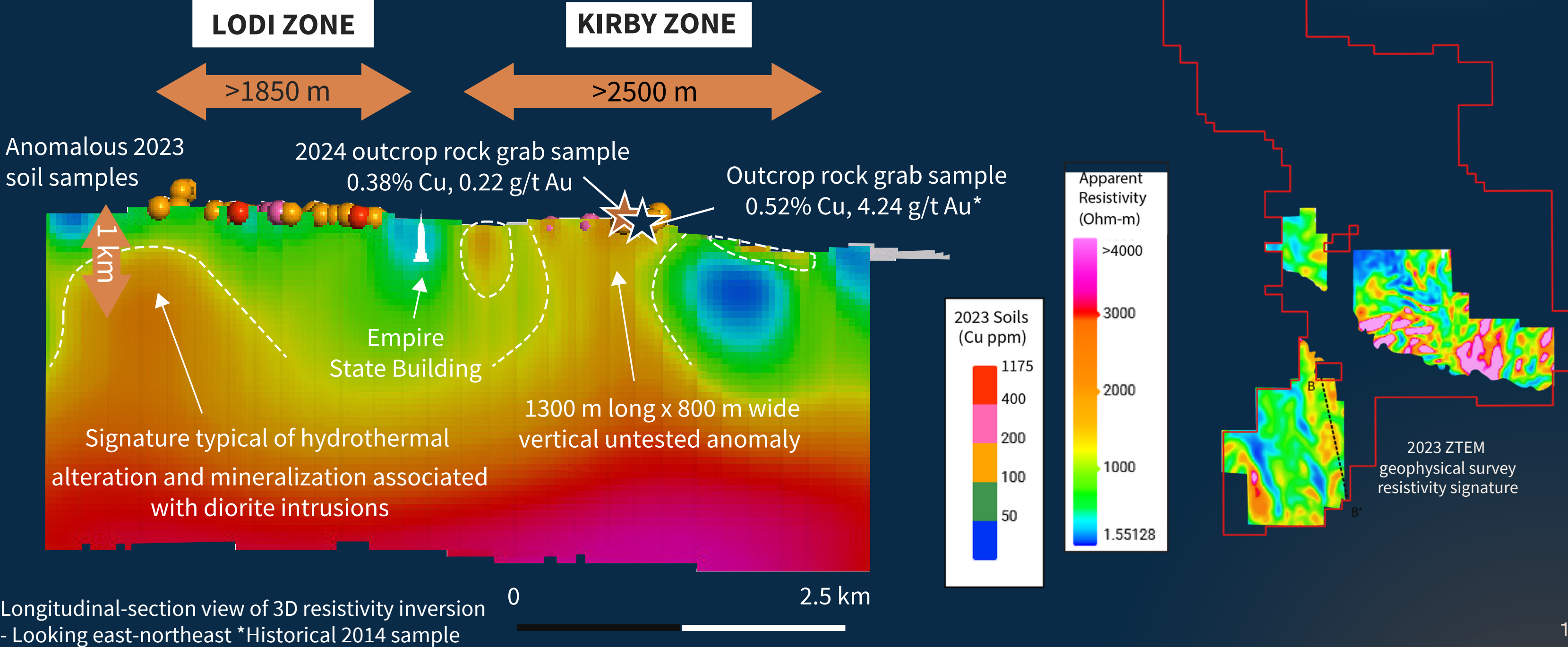


# DEEP-REACHING GEOPHYSICS

## KIRBY-LODI TARGETS PART OF A LARGER MULTI-CENTER PORPHYRY SYSTEM

### LODI-KIRBY ZONES

#### 2023 ZTEM GEOPHYSICAL SURVEY

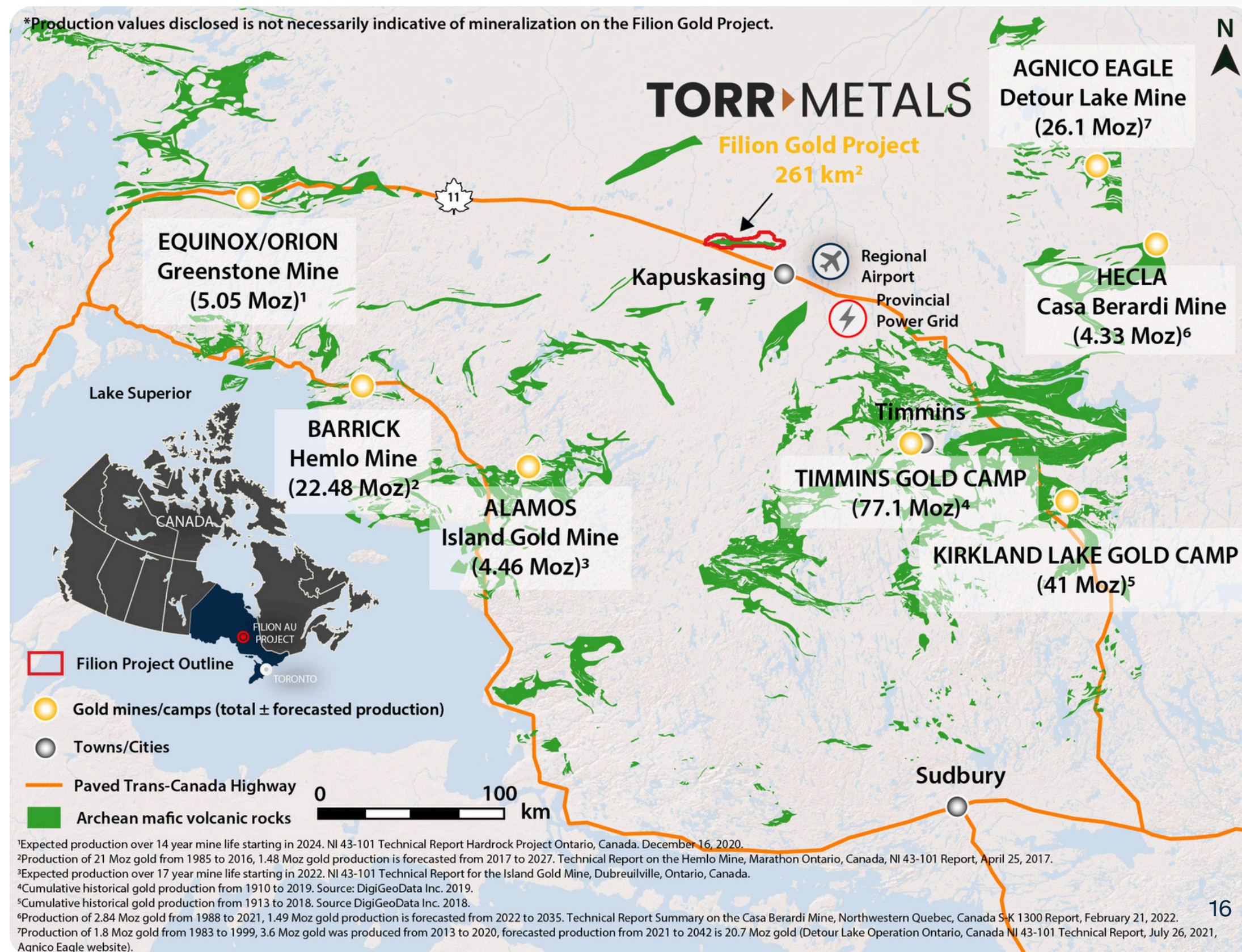




# FILION GOLD PROJECT

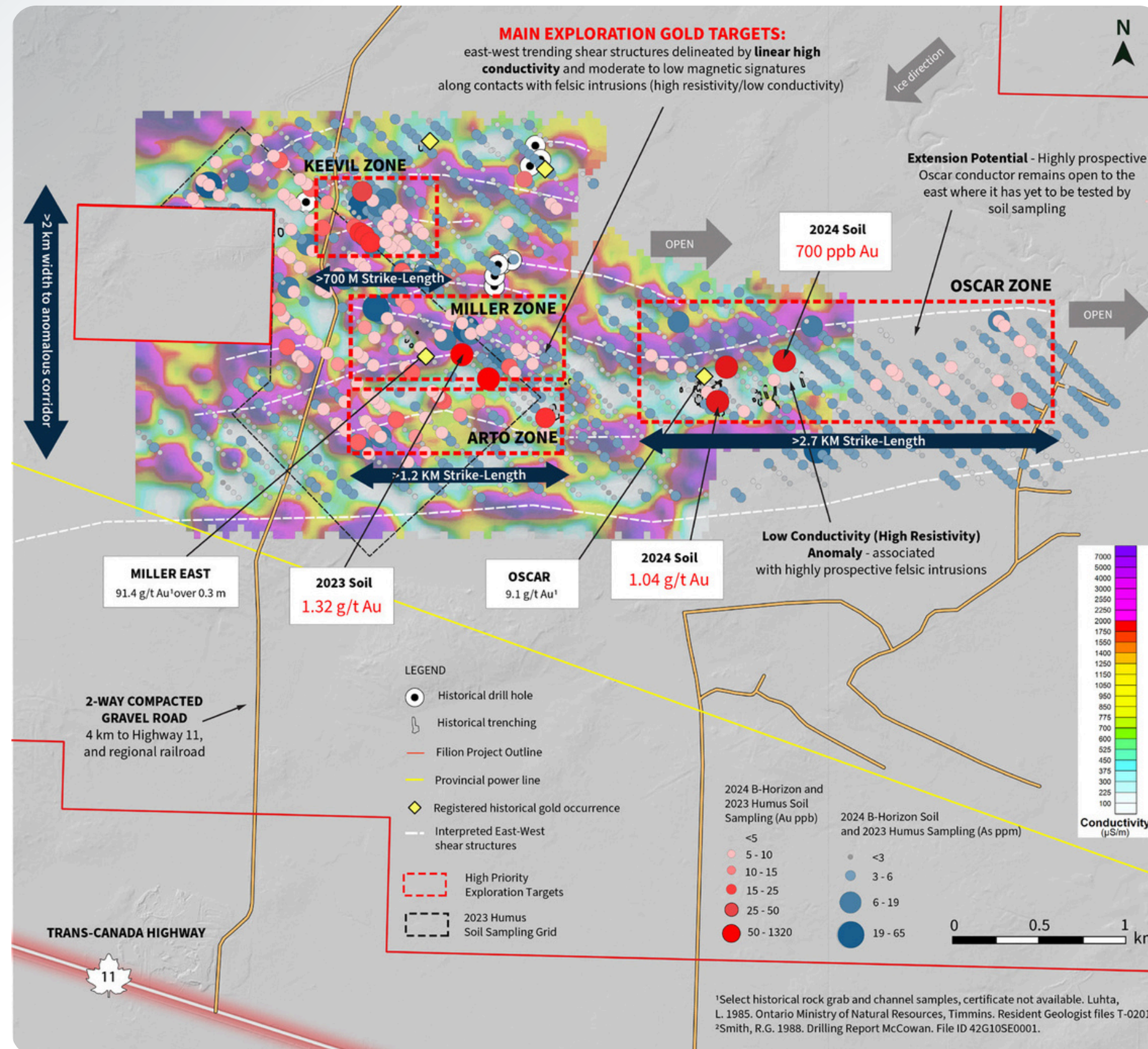
TORR METALS

- **District-Scale Potential**
  - Paralleling deep-seated gold structure comparable to the Greenstone Mine\*
- **High-Grade Samples**
  - Up to 91.4 g/t Au (historical rock); 1.32 g/t Au (soil, 2024)
- **Largely Untested**
  - Only 17% of the 42 km Filion Fault is explored
- **Year-Round Access**
  - Direct to Highway 11, power, and rail





# FILION - UNLOCKING HIGH-POTENTIAL GOLD



- **4 Undrilled Gold Zones**
  - With strong soil pathfinder anomalies (As-W-Te-Bi) for orogenic gold
- **Untested Conductors with 5 km Strike**
  - Miller and Oscar zones show coincident geophysical and gold anomalies
- **Priority Drill Targets**
  - Soil results >1 g/t Au suggest proximity to near-surface robust gold system

# WHY TORR. WHY NOW.

**Early-Stage  
Upside**

**Strategic Copper Gold  
Commodity Focus**

**Discovery-  
Driven**

**Infrastructure  
Advantage**

**Diverse, High-  
Potential Portfolio**

**Tight Structure &  
Team**

- Mobilization for geochemical and IP geophysics surveys at Sonic in 2025
- Inaugural drill program at Bertha target in 2025
- Drill permit pending on the Sonic Zone



# TORR▶METALS

TSX.V | TMET

Malcolm Dorsey

President, CEO & Director  
malcolmd@torrmetals.com

Edmonton Office

250 SouthridgeNW, Suite 300  
Edmonton, AB Canada, T6H 4M9

<sup>1</sup>Gibraltar: Taseko Reserves and Resources Website Information, accessed August 21, 2025

<sup>2</sup>Highland Valley: Teck Mineral P&P, M&I, Inferred Resources Annual Information For February 23, 2022 (Teck.com)

<sup>3</sup>Copper Mountain: Mineral Reserves and Resources as of January 1, 2025. (hudsonbayminerals.com)

<sup>4</sup>Mount Polley: Imperial Metals P&P, M&I, Inferred Resources Reserves and Resources; Website Information, dated June, 2023 (www.imperialmetals.com)

<sup>5</sup>New Afton: NI 43-101 Technical Report. Effective Date December 31, 2024. (newgold.com)

<sup>6</sup>Ajax: KGHM Mineral Resources and Reserves Report. as of December 31, 2014. (kgm.com)

<sup>7</sup>Weeks et al., 2003. The Brenda Mine in Porphyry Copper Deposits of the Calc-Alkalic Suite Paper 9 of the Porphyry Deposits of Northwestern Cordillera of North America, CIM Special Volume 46, pp 192-200

\*Information and comparisons disclosed is not necessarily indicative of precious or base metal endowment or assays on the Kolos Project.